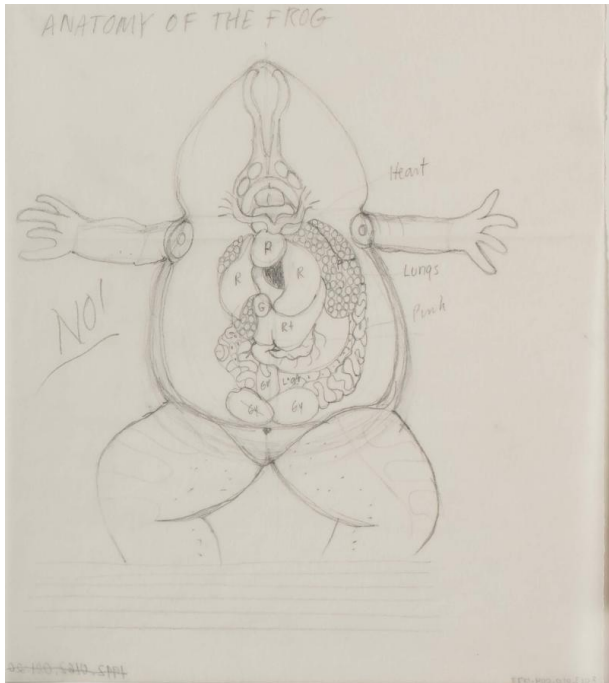


Basic Detail Report



Anatomy of the frog from Frogs, Toads, Lizards, and Salamanders

Primary Maker

Nancy Winslow Parker

Date

1990

Medium

Graphite on tracing paper

Dimensions

Image: 22.6 × 20.3 cm (8 7/8 × 8 in.) Sheet: 22.6 × 20.3 cm (8 7/8 × 8 in.)

Credit Line

Gift of the artist