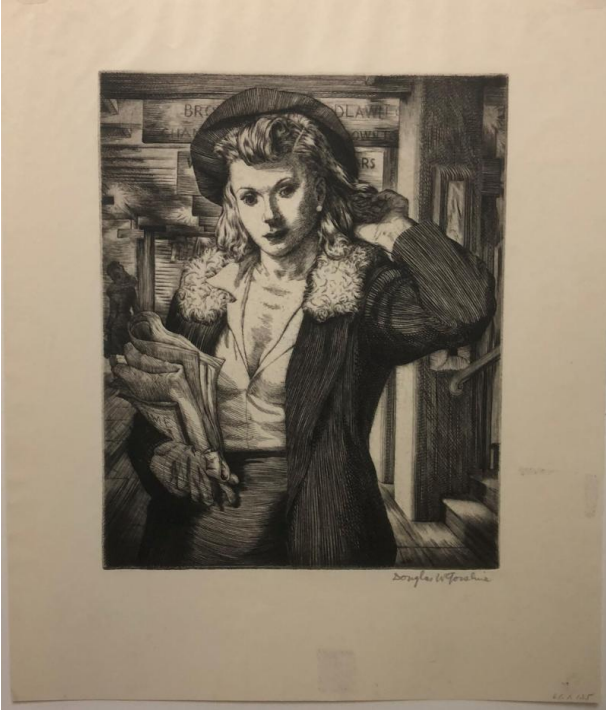


Basic Detail Report



Brooklyn Local

Primary Maker

Douglas W. Gorsline

Date

1945

Medium

Etching on paper

Dimensions

Image: 26.7 × 14.8 cm (10 1/2 × 5 13/16 in.) Sheet: 30.3 × 25.7 cm (11 15/16 × 10 1/8 in.)

Credit Line

Gift of Louis Rudin