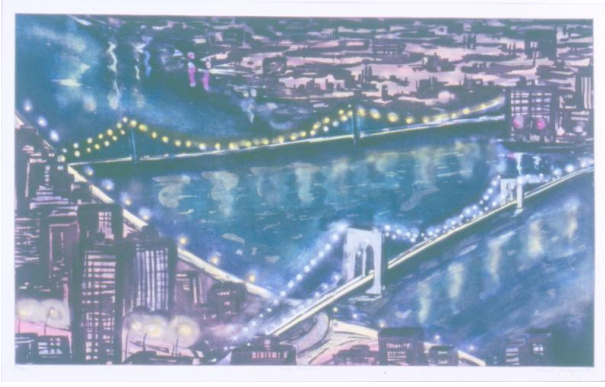


# Basic Detail Report

---



## City Pearls

### Primary Maker

Sarah Brayer

### Date

1986

### Medium

Sugar-lift aquatint with white ground on Arches Cover

paper

### Dimensions

Image: 60.6 x 101 cm (23 7/8 x 39 3/4 in.) Sheet: 78 x 116.7 cm (30 11/16 x 45 15/16 in.)

### Credit Line

Purchased in part with a grant from the National Endowment for the Arts, a federal agency